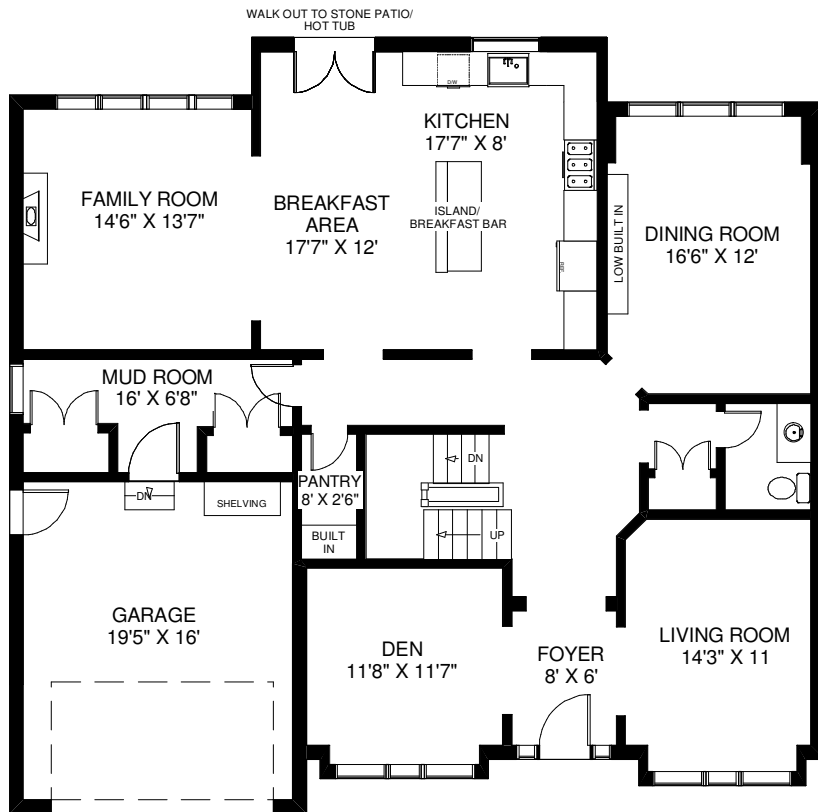
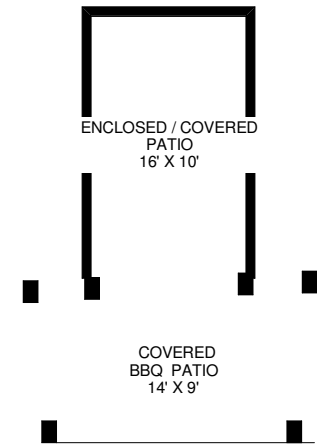


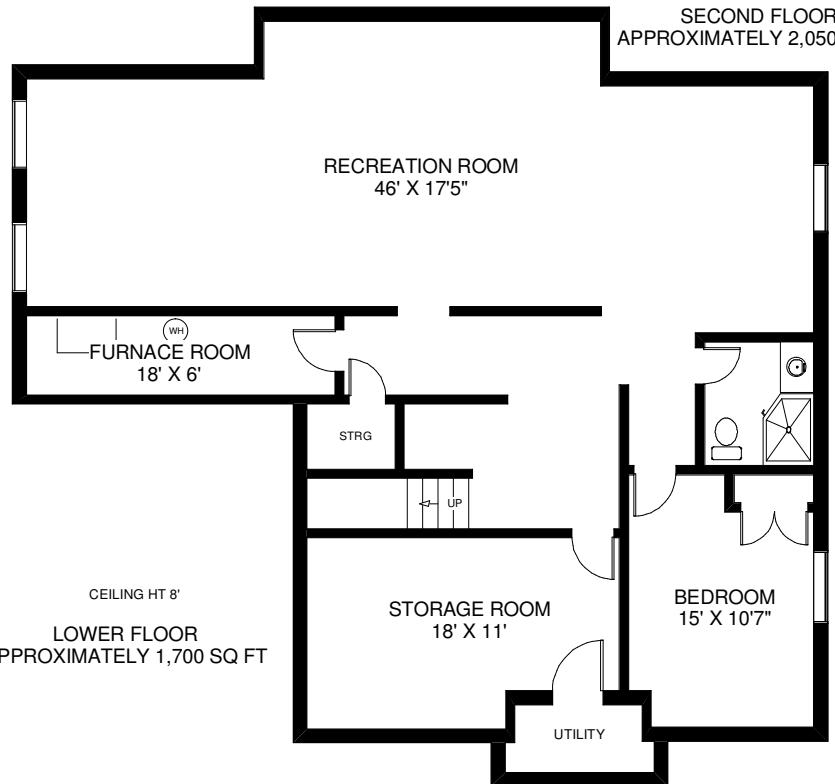
45 HERNE HILL



CEILING HT 10'
MAIN FLOOR
APPROXIMATELY 1,700 SQ FT



CEILING HT 8'
SECOND FLOOR
APPROXIMATELY 2,050 SQ FT



CEILING HT 8'
LOWER FLOOR
APPROXIMATELY 1,700 SQ FT

Note: Measurements & Calculations are approximate. Provided as a guideline only.