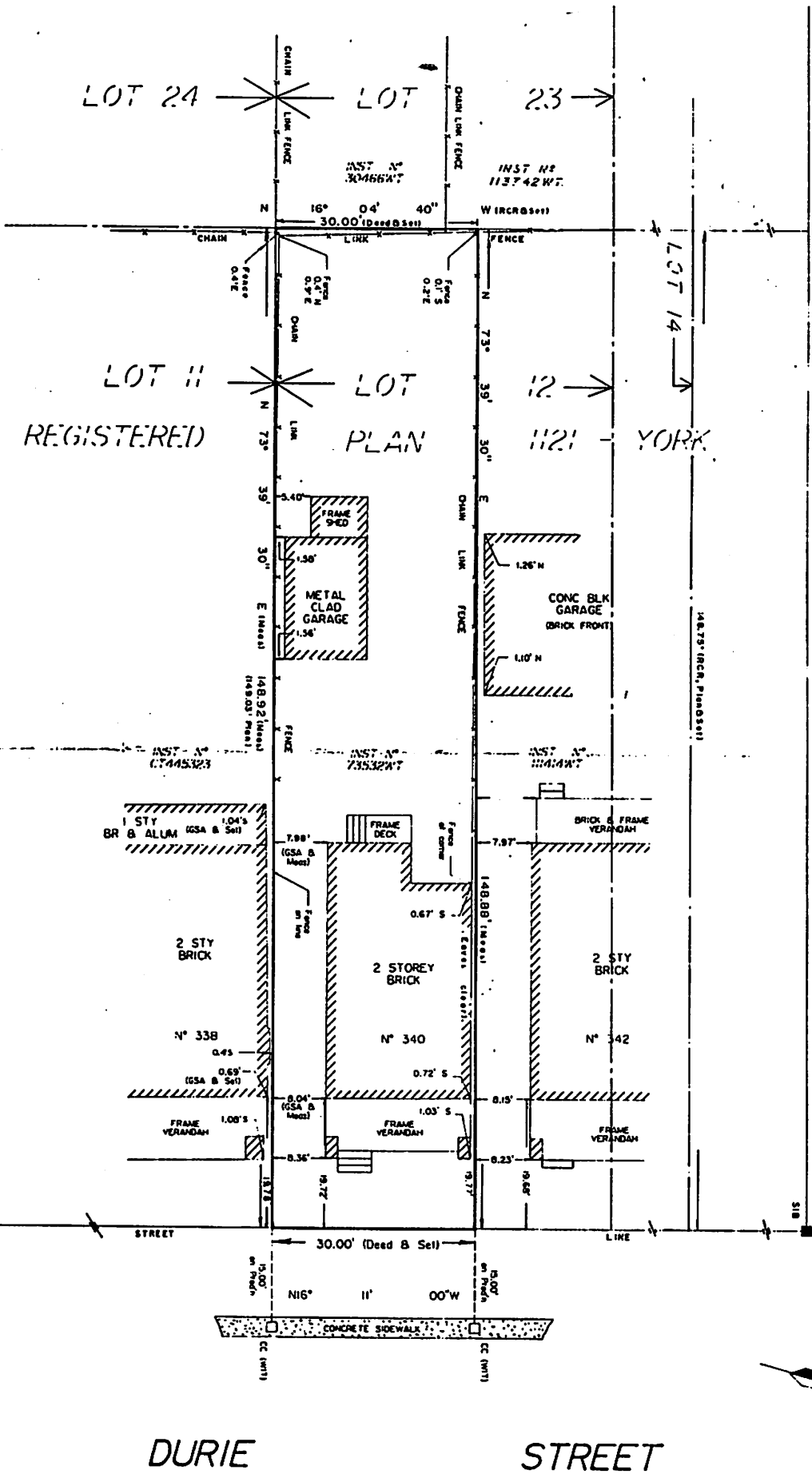


BUILDING LOCATION SURVEY OF
PART OF LOT 12, REGISTERED PLAN 1121-YORK
 CITY OF TORONTO, MUNICIPALITY OF METROPOLITAN TORONTO
 SCALE : 1" = 15' 0" (1:180)
 R.C. RABIDEAU SURVEYING LTD., O.L.S.
 1988

COLBECK STREET
 (Formerly DARCY STREET)
 STREET



DURIE STREET



BEARING NOTE 9 DISTRICTS SET LEGEND SURVEYOR'S CERTIFICATE R.C. RABIDEAU, O.L.S.