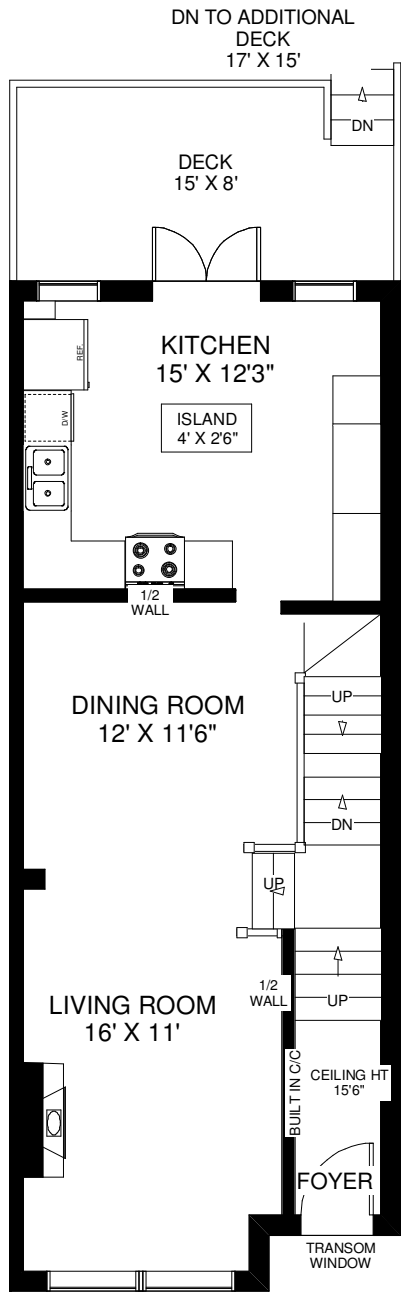
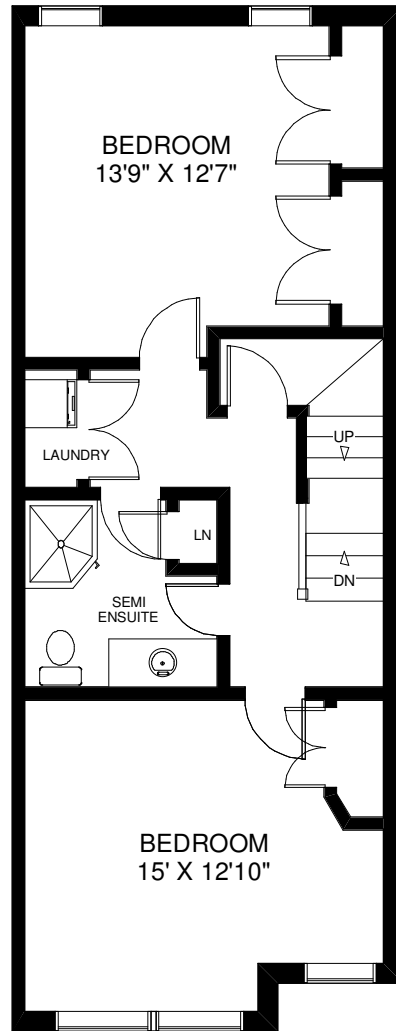


# 40 SAN REMO TERRACE



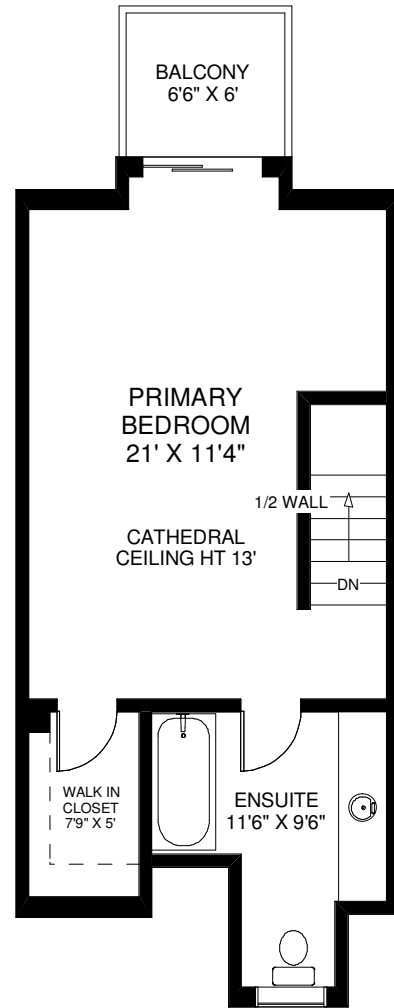
CEILING HT 9'

MAIN FLOOR  
APPROXIMATELY 670 SQ FT

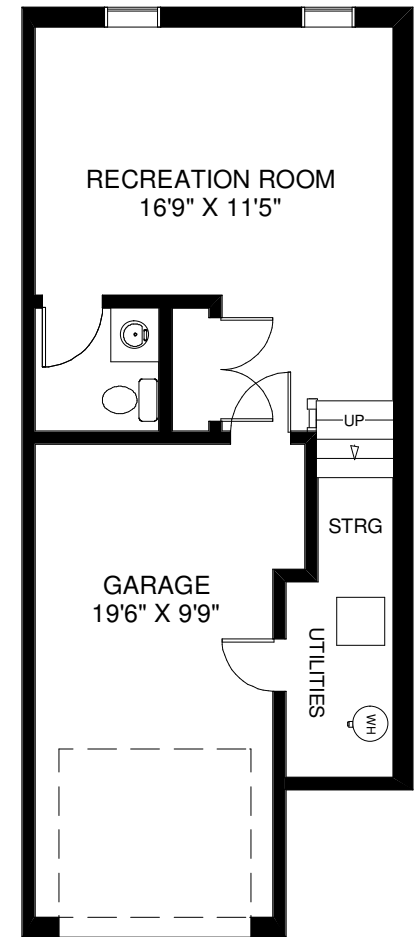


CEILING HT 8'

SECOND FLOOR  
APPROXIMATELY 670 SQ FT



THIRD FLOOR  
APPROXIMATELY 510 SQ FT



CEILING HT 8'

LOWER FLOOR  
APPROXIMATELY 375 SQ FT